

DELEGATE PACKAGES



GROWN AT WISLEY, PLATED AT WISLEY

We believe in menus that feature an honest approach, with simplicity, seasonality and quality at the core. We are passionate about supporting independent, regional growers and producers and we build our menus around vegetables and salads grown at RHS Wisley.

We love the seasonal bounty of fresh British produce - we get excited about asparagus in April, gooseberries in August and even the humble sprout. When the quality of ingredients is good, the flavours of the dishes speak for themselves.

We are committed to reassuring an enjoyable experience with our new hygiene measures and risk assessments that have been carefully crafted within the guidelines and advice given by the UK government and the World Health organisation. Please ask your event manager for advice or concerns.



DELEGATE PACKAGES

We have designed a selection of delegate packages to make organising your next meeting a breeze. The catering packages are designed to include standard catering equipment and staffing, and keep you safe within the latest COVID-19 regulations.

HALF-DAY DELEGATE PACKAGES I 37.00 per person

Welcome & mid-morning coffee and tea break

Freshly baked mini danish pastries on arrival, two per person

One 330ml purified water bottle per person

Choice of sandwich lunch, including Piper's crisps, seasonal fruit, purified water, apple or orange juice

Based on a four hour event

FULL-DAY DELEGATE PACKAGES I 49.00 per person

Welcome, mid-morning and afternoon coffee and tea break

Freshly baked mini danish pastries on arrival, two per person

Two 330ml purified water bottles per person

Choice of sandwich lunch, including Piper's crisps, seasonal fruit, purified water, apple or orange juice

Chefs selection of biscuits for afternoon break

Based on a eight-hour event

FULL-DAY DELEGATE PACKAGES I 55.00 per person

Welcome, mid-morning and afternoon coffee and tea break

Freshly baked mini danish pastries on arrival

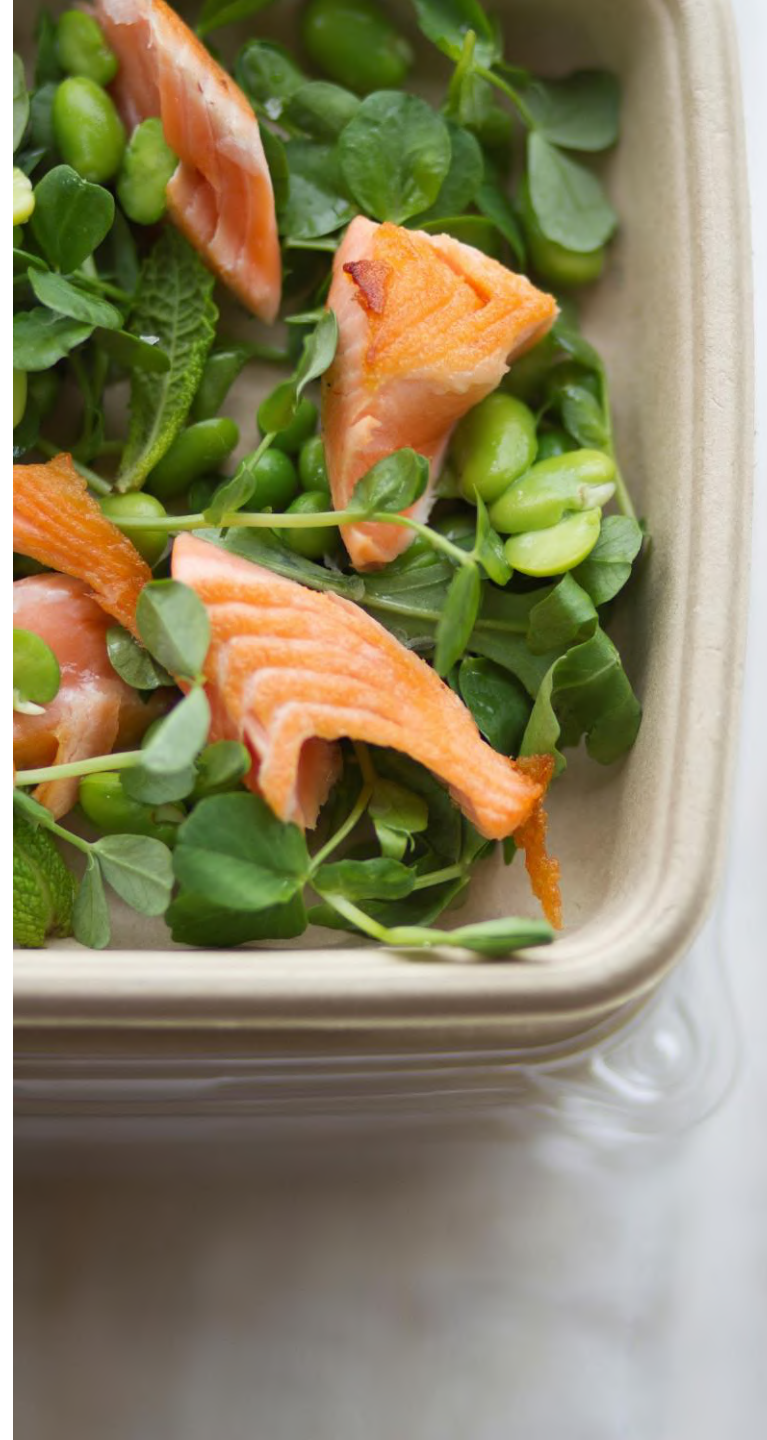
Two 330ml purified water bottles per person

Choice of bowl food, 2 savouries

Chefs selection of biscuits for afternoon break

Based on a eight-hour event

Note: Meeting packages are applicable to all RHS Wisley venues with the exception of Hilltop, Terrace Restaurant and Butterfly Lovers Pavilion. Please consult your Event Manager on terms and conditions.



DELEGATE PACKAGES I ENHANCEMENTS

Should you wish to upgrade any element of your day please speak to your Event Manager. We have listed a few enhancements, to not limited to, in making your day successful.

ADDITIONAL FOOD ENHANCEMENTS I per person

Additional mini danish pastries	2.90
Free range bacon and roast tomato bap	5.80
Miniature smoked salmon and cream cheese bagel	5.80
Roasted tomato and cheese bap	5.80
Greek yogurt, granola, honey	5.20
Greek yogurt, seasonal compote	5.20
Sweet bakery, 2 per order	2.90
Additional bowl food choice	9.00
Seasonal salads	3.60
Cut fresh vegetables, harissa hummus	3.60

ADDITIONAL BEVERAGE ENHANCEMENTS I per item

Orange juice, 1l	7.80
Wisley-made still elderflower lemonade, 1l	7.80
Owlet Farm Cox & Bramley apple juice, 1l	8.40
Selection of soft drinks, 250ml	2.40
Still or sparkling mineral water, 300ml	3.00



DELEGATE PACKAGES | ENHANCEMENTS

Should you wish to enhance your experience post meeting with us please speak to your Event Manager. All prices are based on a one-hour event.

DRINKS RECEPTION | 18.00 per person

Unlimited selection of House white and red wine, beer
Unlimited soft drinks and mineral water

CANAPE RECEPTION | 23.00 per person

Unlimited selection of House white and red wine, beer
Unlimited soft drinks and mineral water
Selection of savoury and sweet canapes, 6 per person

PREMIUM CANAPE RECEPTION | 27.00 per person

Unlimited selection of House white and red wine, prosecco, beer
Unlimited soft drinks and mineral water
Unlimited House spirits with mixers
Selection of savoury and sweet canapes, 6 per person

BBQ RECEPTION | 30.00 per person

Unlimited selection of House white and red wine, beer
Unlimited soft drinks and mineral water
Selection of BBQ, 1 Main course and 2 sides

Note: Meeting packages are applicable to all RHS Wisley venues with the exception of Hilltop. Please consult your Event Manager on terms and conditions. Depending on final menu selections, a field kitchen charge may be applicable for the Glasshouse.

