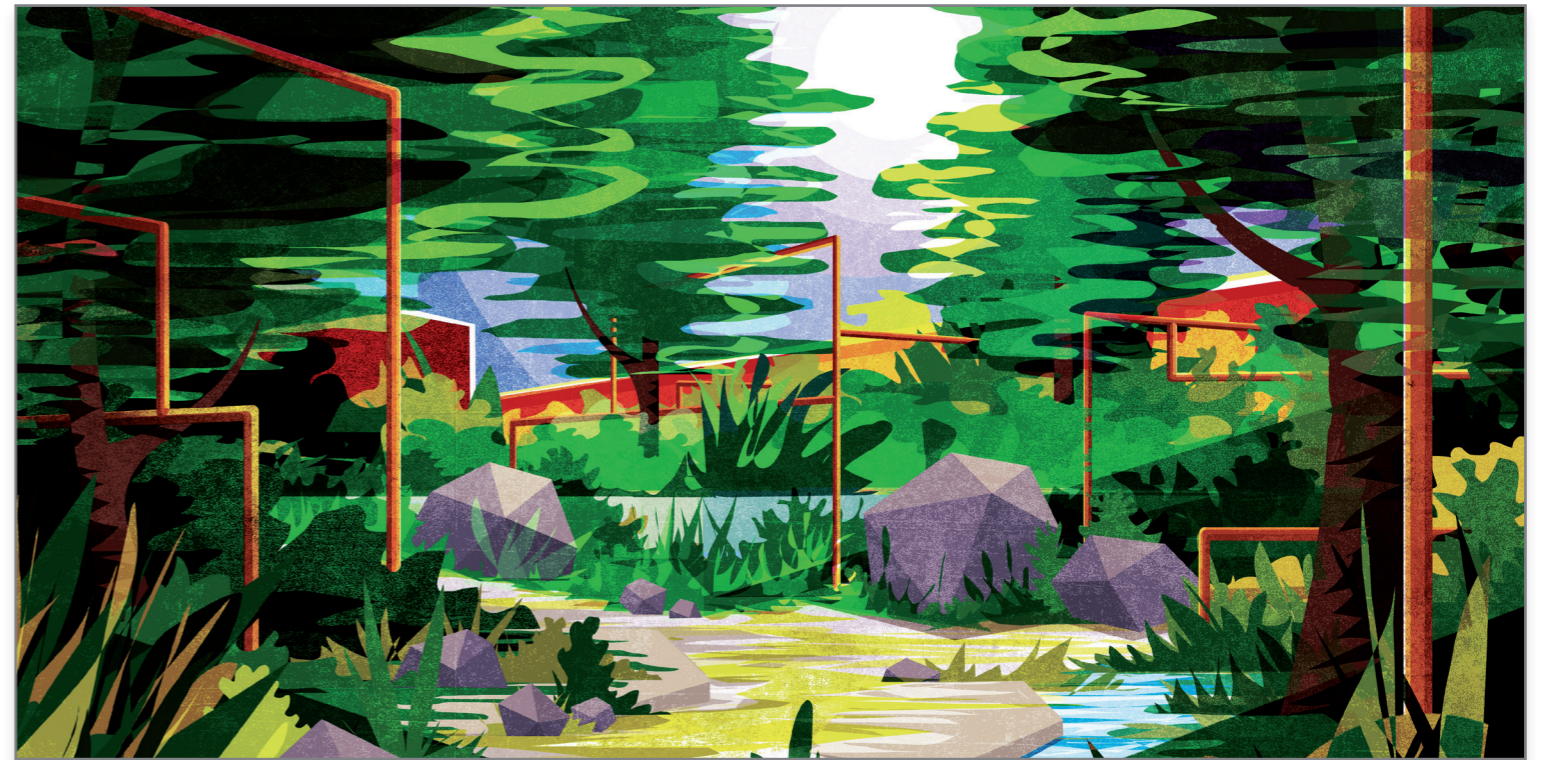


RHS Chelsea Flower Show 2021

Inspired by The M&G Garden 2m x 1m Planting Plan

Create your own -
'Urban environment' themed area inspired by The M&G Garden.

The M&G Garden is designed to be a shared haven of natural beauty and wildlife where we need it the most: the busy urban environment. Our aim is to inspire communities, architects and developers to improve the quality of life and health for city dwellers by creating sustainable green space in their plans.



Plant Shopping List & Key

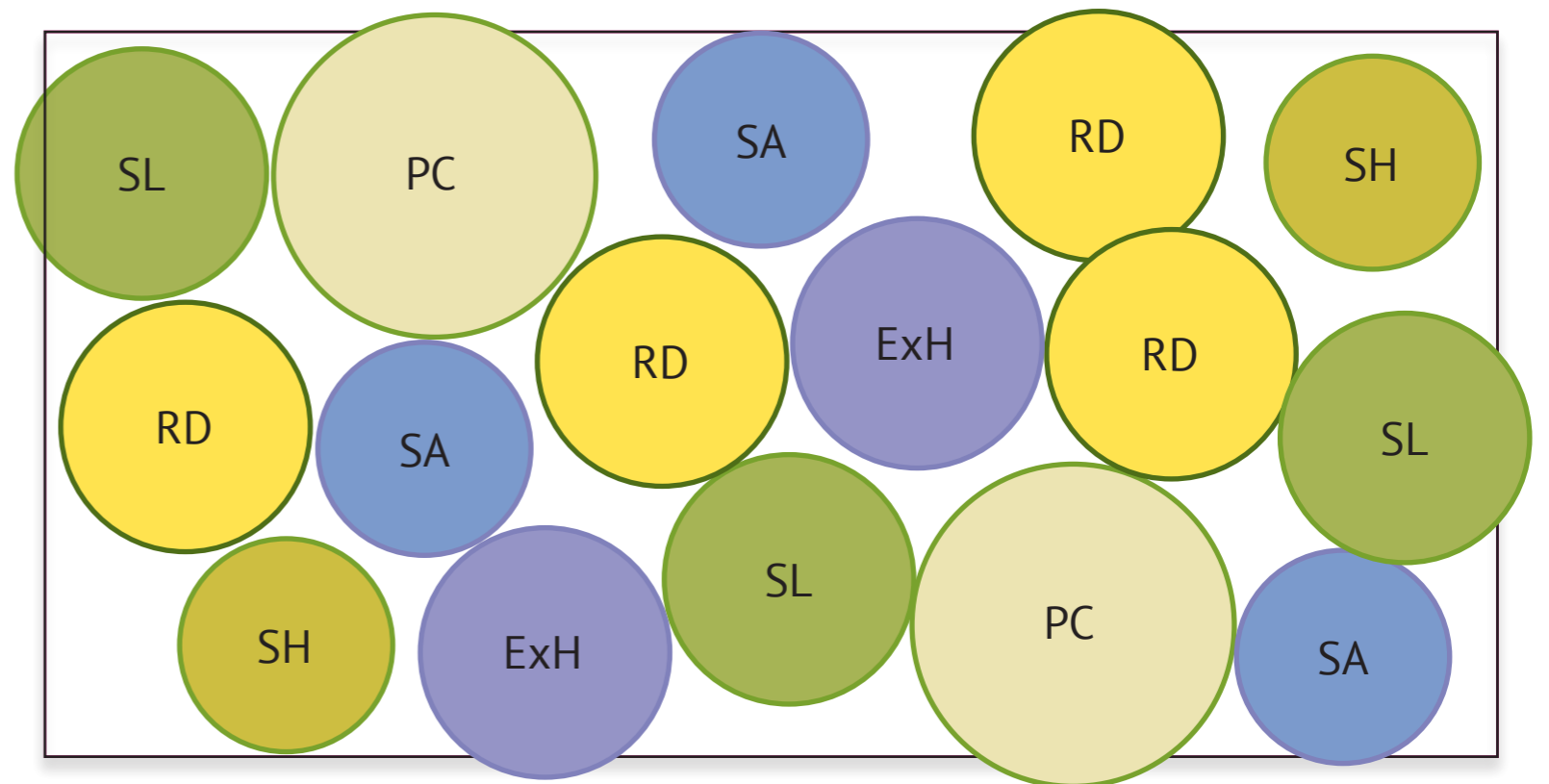
ExH	<i>Eurybia x herveyi</i> (syn Twilight)	x 2
PC	<i>Pennisetum alopecuroides</i> 'Cassian's Choice'	x 2
RD	<i>Rudbeckia fulgida</i> var. <i>deamii</i>	x 4
SL	<i>Solidago x luteus</i> 'Lemore'	x 3
SH	<i>Sporobolus heterolepis</i>	x 2
SA	<i>Strobilanthes attenuata</i> 'Blue Carpet'	x 3

Alternatives:

ExH	<i>Kalimeris incisa</i> 'Charlotte'	x 2
RD	<i>Rudbeckia hirta</i>	x 4

Optional bulbs:

<i>Camassia cusickii</i>	x 50
--------------------------	------



Scale 1:10

Aspect: Partial/Dappled Shade
Soil: Humus rich, moist but well drained.